

## SX-BR-4600WAN Wireless Bridge



### Gigabit Ethernet to Dual Band 802.11n Converter

#### Wired Ethernet devices can be used in a secure wireless LAN environment

##### Overview:

The SX-BR-4600WAN allows any Ethernet enabled device to join a secure, high-speed network. It is software transparent meaning no changes to drivers, management tools, or applications are needed. It allows flexibility to locate Ethernet devices in places where running cables is difficult or impossible. It supports industry leading security including WPA, WPA2, and WEP, plus 802.1x authentication with the most commonly used EAP types.

##### Main Features:

#### 1 Easily add robust, secure wireless capabilities to Ethernet devices

The Silex SX-BR-4600WAN is a high-performance wireless network adapter which enables any Ethernet device to become an 802.11a/b/g/n dual band wireless network device, giving you freedom to place it anywhere in your facility.

#### 2 Dual band IEEE 802.11a/b/g/n support

SX-BR-4600WAN is designed to communicate in the 2.4 GHz and 5 GHz bands. Radio interference in the commonly used 2.4 GHz band can be avoided by utilizing 5 GHz.

#### 3 Gigabit Ethernet support

The wired LAN port supports 10/100/1000BASE-T (auto-recognition).

#### 4 Two operation modes

##### Single client mode

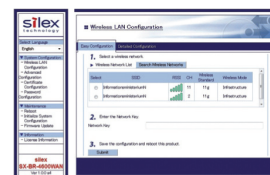
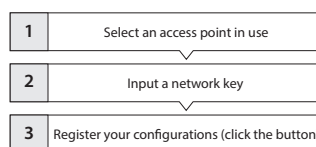
- Able to connect one device, connected to the wired LAN port of SX-BR-4600WAN using a LAN cable, to a wireless LAN
- Uses the MAC address of the device connected to the wired LAN port for wireless communications (MAC address transparency feature)
- Stops the bridge functionality when the device connected to the wired LAN port is replaced by another device (security feature)

##### Multi-client mode

- Able to connect up to 16 wired LAN devices through a HUB to the wireless LAN.
- Uses the MAC address of the SX-BR-4600WAN for wireless LAN communications.

#### 5 Simple to setup and use (patented)

SX-BR-4600WAN is easy to set up using the enclosed network setup cable. No special drivers or software are required.



#### 6 Enterprise security

SX-BR-4600WAN supports the following security functions:

- WEP (64 Bit/128 Bit)
- WPA-PSK (TKIP/AES)
- WPA2-PSK (AES)
- IEEE 802.1X EAP-PEAP, EAP-TLS, EAP-TTLS, EAP-FAST, EAP-LEAP

##### Technical Data:

Product Name	SX-BR-4600WAN
Network Interface	10BASE-T, 100BASE-TX, 1000BASE-T (Auto-recognition)
Wireless LAN	IEEE 802.11a/b/g/n (11n:2-Stream)
Security	WEP (64/128), WPA-PSK (TKIP/AES), WPA2-PSK (AES), IEEE 802.1X (EAP-PEAP, EAP-TLS, EAP-TTLS, EAP-FAST, EAP-LEAP)
Dimensions	110.5 mm x 79.0 mm x 27.6 mm
Weight	130 g
Maximum Power Consumption	3.75W
Approvals	FCC, IC, VCCI, CE
Environmental Conditions	Operating: 0°C to 40°C Humidity: 20% to 80% RH Storage: -10°C to +50°C Humidity: 20% to 90% RH
Accessories	Main unit, setup guide, warranty, AC adapter, LAN cable, GPL inquiry sheet

silex technology is a registered trademark of silex technology, Inc. Other product or brand names may be registered trademarks or trademarks of their respective owners. Technical information and specifications are subject to change without notice. © 2013 silex technology, Inc. All rights reserved.

### silex global marketing & support locations